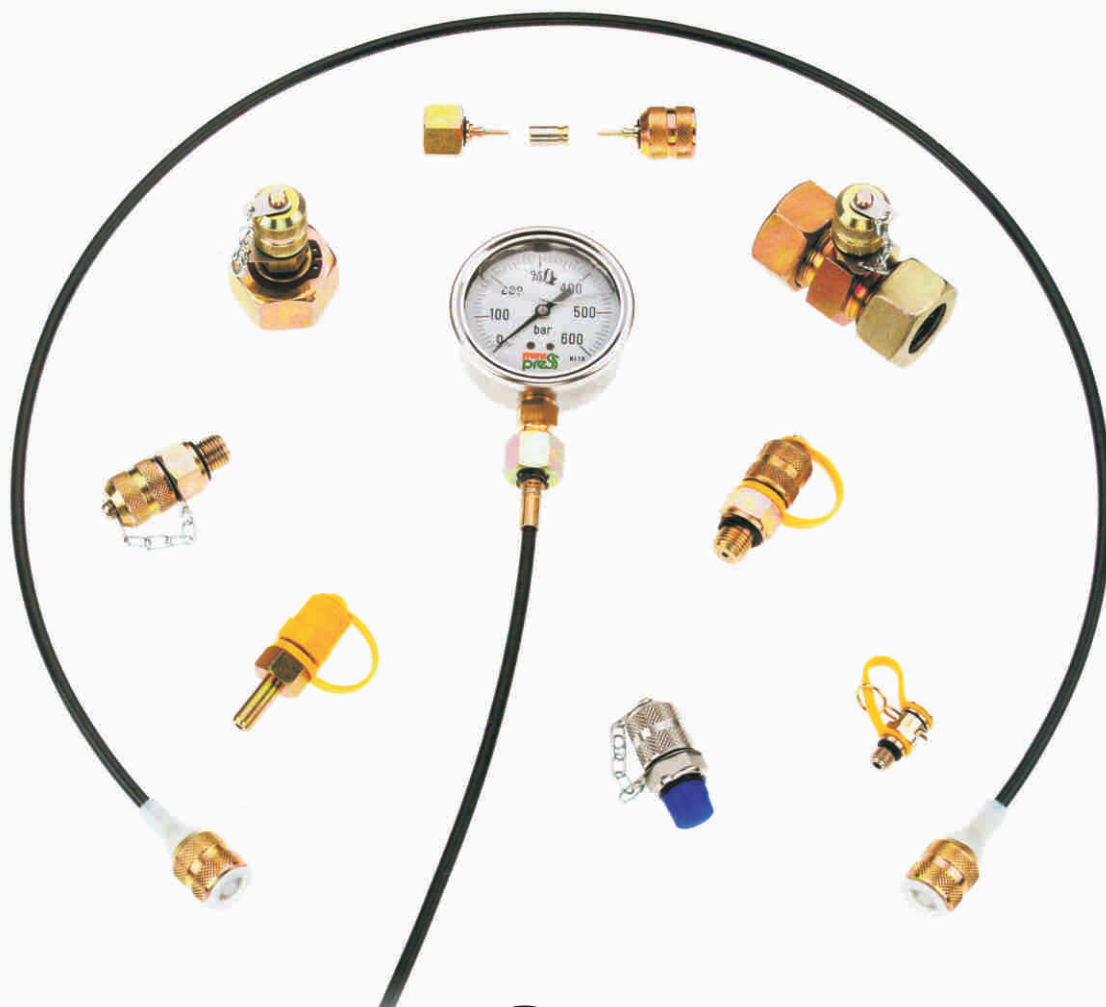


Miniprese controllo pressione  
Tubi capillari  
Adattatori per manometri

*Test couplings  
Micro hoses  
Gauge adaptors*

**mini  
press**  
oleodinamica

mini  
press



# MANOMETER ŞTRAI FURI DE MĂSURAT



# Tubo capillare alta pressione e raccordi

Micro hose for high pressure and fittings

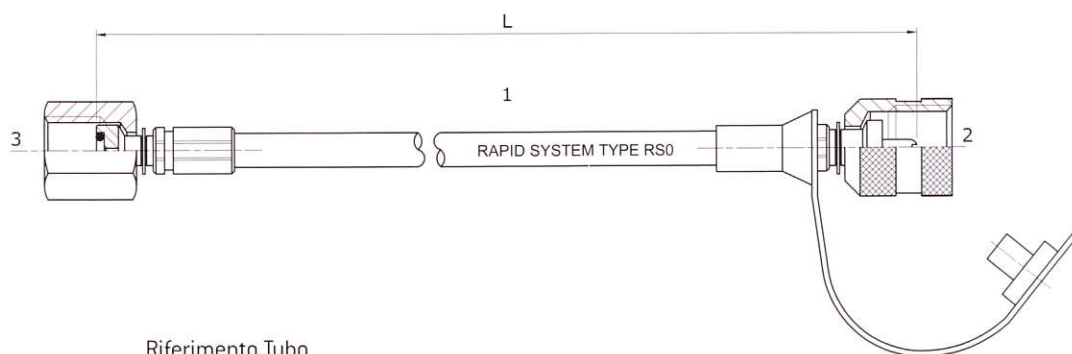
**Normativa di riferimento**  
Reference regulations

**Tubo capillare alta pressione e raccordi**  
Micro hose for high pressure and fittings

**Esempio per l'ordine**

Ordering example

|   |                     |
|---|---------------------|
| 1 - Tubo / Hose type:                     | RS0                 |
| 2 - Tipo raccordo / Fitting type:         | 31TN                |
| 3 - Tipo raccordo / Fitting type:         | 3614                |
| L - Lung. tubo (mm.) / Hose length (mm.): | 1500                |
| Codice ordine / Order code:               | RS0 31TN/3614 L1500 |



Riferimento Tubo  
Hose code

| RS0   |            |
|---|------------|
| Diametro esterno mm.<br>Outside diameter mm.                  | 5,5        |
| Diametro interno mm.<br>Inside diameter mm.                   | 2,1        |
| Pressione max. di lavoro bar<br>Max. working pressure bar     | 630        |
| Pressione minima di scoppio bar<br>Min. Bursting pressure bar | 1900       |
| Pressione di prova bar<br>Testing pressure bar                | 950        |
| Raggio minimo mm.<br>Min. Bending radius mm.                  | 20         |
| Temperature di esercizio °C<br>Working temperature            | -40...+100 |

Adatto per passaggio di oli minerali, oli idraulici tipo ASTM 3, benzine, resistenza chimica all'olio per freni (tipo DOT 4)  
For mineral and hydraulic oil, type ASTM 3, fuel, brake systems oil [type DOT 4]

| Materiale anima<br>Core material                    | Materiale treccia<br>Braid material        | Ricopertura est.<br>Cover material                     |
|---|--|--|
| Poliestere termoplastico<br>Thermoplastic polyester | Fibra aramidica<br>Aramidic fibre "kevlar" | Poliuretano antiabrasione<br>Antiabrasion polyurethane |

Riferimento Tubo  
Hose code

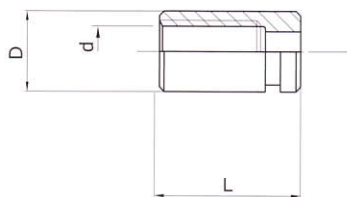
| RFR   |            |
|---|------------|
| Diametro esterno mm.<br>Outside diameter mm.                  | 5,5        |
| Diametro interno mm.<br>Inside diameter mm.                   | 2,1        |
| Pressione max. di lavoro bar<br>Max. working pressure bar     | 150        |
| Pressione minima di scoppio bar<br>Min. Bursting pressure bar | 600        |
| Pressione di prova bar<br>Testing pressure bar                | 300        |
| Raggio minimo mm.<br>Min. Bending radius mm.                  | 20         |
| Temperature di esercizio °C<br>Working temperature            | -40...+100 |

Adatto per passaggio Gas FREON 22 - 134A per impianti di condizionamento e refrigerazione.  
For FREON 22 - 134A conduction for air conditioning and cooling systems

| Materiale anima<br>Core material | Materiale treccia<br>Braid material | Ricopertura est.<br>Cover material                              |
|----------------------------------|-------------------------------------|---|
| Poliammide<br>Polyamide          | Fibra poliestere<br>Polyester fibre | Poliuretano con microfori<br>Polyurethane with pricking surface |

# Tubo capillare alta pressione e raccordi

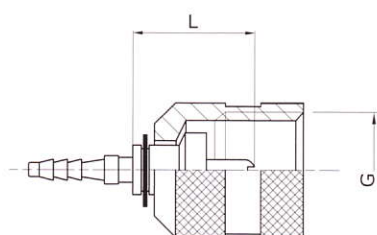
Micro hose for high pressure and fittings



Ghiera a pressare  
*Ferrule*

| D  | d   | L  | Codice / Ref. |
|----|-----|----|---------------|
| 8  | 5,5 | 15 | 30BT0000      |
| 8* | 5,5 | 15 | 30BTA000      |

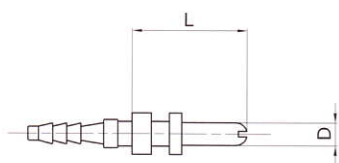
\*AISI 304



Raccordo connessione avvitabile per minipresa  
*Test coupling threaded connection fitting*

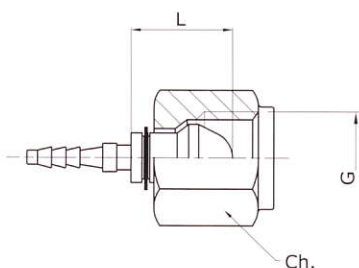
| G       | L    | Ch | PN bar | Codice / Ref. |
|---------|------|----|--------|---------------|
| M16x2   | 18,5 | 19 | 630    | 31TN0000      |
| M16x2*  | 18,5 | 19 | 630    | 31AI0000      |
| M16x1,5 | 18,5 | 19 | 630    | 31TS0000      |

\*AISI 316



Innesto per minipresa a baionetta  
*Plug-in connection*

| D   | L  | PN bar | Codice / Ref. |
|-----|----|--------|---------------|
| 3,3 | 15 | 400    | 33TD0000      |



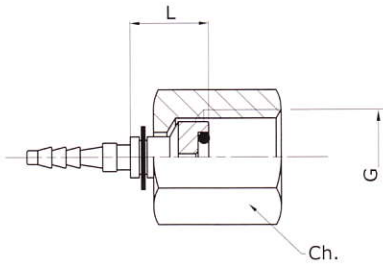
Raccordo femmina girevole connessione cono 60°  
*Swivel female fitting. 60° cone connection*

| G                | L  | Ch | PN bar | Codice / Ref. |
|------------------|----|----|--------|---------------|
| ISO 228 G 1/8"   | 10 | 14 | 630    | 38180000      |
| ISO 228 G 1/4"   | 13 | 17 | 630    | 38140000      |
| ISO 228 G 1/4" * | 13 | 17 | 630    | 3814AI00      |
| ISO 228 G 3/8"   | 15 | 22 | 630    | 38380000      |

\*AISI 316

# Tubo capillare alta pressione e raccordi

*Micro hose for high pressure and fittings*

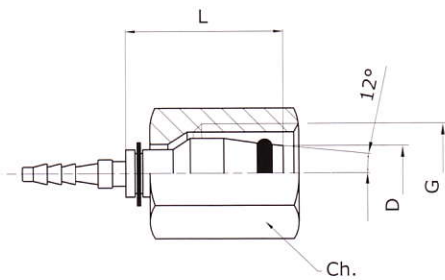


Attacco diretto per manometro. NORMA DIN 16228

*Direct pressure gauge connection. According to DIN 16228*

| G               | L    | Ch | PN bar | Codice / Ref. |
|-----------------|------|----|--------|---------------|
| ISO 228 G 1/4"  | 11,5 | 19 | 630    | 36140000      |
| ISO 228 G 1/4"* | 11,5 | 19 | 630    | 3614AI00      |
| ISO 228 G 1/2"  | 19,5 | 27 | 630    | 36120000      |

\*AISI 316



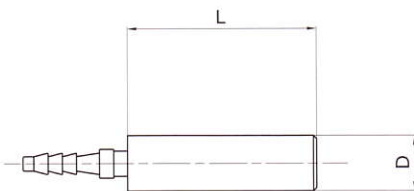
Raccordo a codolo 24° tenuta O-Ring. NORMA DIN 3865

*Seal with O-Ring for 24° cone fitting. According to DIN 3865*

| G            | D  | L  | Ch | PN bar | Codice / Ref. |
|--------------|----|----|----|--------|---------------|
| M 12x1,5 6L  | 6  | 18 | 14 | 315    | 35R00000      |
| M 14x1,5 6S  | 6  | 18 | 17 | 630    | 35R10000      |
| M 14x1,5 8L  | 8  | 18 | 17 | 315    | 35R20000      |
| M 16x1,5 8S  | 8  | 18 | 19 | 630    | 35R30000      |
| M 16x1,5 10L | 10 | 18 | 19 | 315    | 35R50000      |
| M 18x1,5 10S | 10 | 18 | 22 | 630    | 35R40000      |

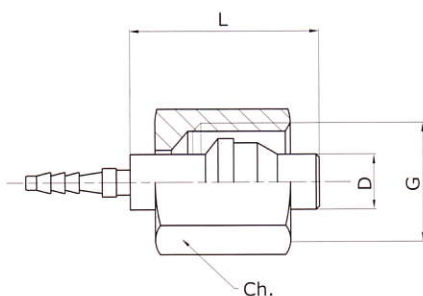
Codolo

*Standpipe*



| D  | L  | Codice / Ref. |
|----|----|---------------|
| 4  | 22 | 34R70000      |
| 6  | 22 | 34R00000      |
| 6* | 22 | 34R0AI00      |
| 8  | 22 | 34R30000      |

\*AISI 316



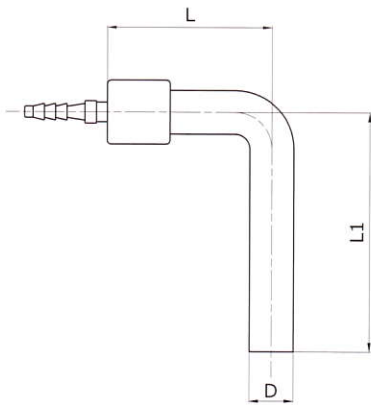
Raccordo a codolo. NORMA DIN 2353

*Standpipe. According to DIN 2353*

| G           | D | L  | Ch | PN bar | Codice / Ref. |
|-------------|---|----|----|--------|---------------|
| M 12x1,5 6L | 6 | 22 | 14 | 315    | 34R10000      |
| M 14x1,5 6S | 6 | 22 | 17 | 630    | 34R20000      |
| M 14x1,5 8L | 8 | 22 | 17 | 315    | 34R40000      |
| M 16x1,5 8S | 8 | 22 | 19 | 630    | 34R60000      |

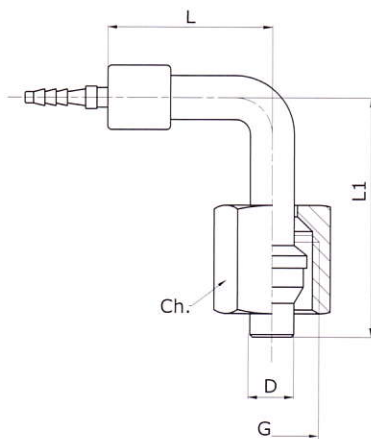
# Tubo capillare alta pressione e raccordi

Micro hose for high pressure and fittings



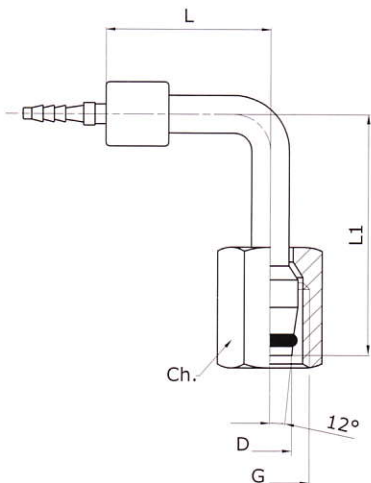
Codolo 90°  
Standpipe 90°

| D | L  | L1 | Codice / Ref. |
|---|----|----|---------------|
| 6 | 24 | 33 | 43900000      |



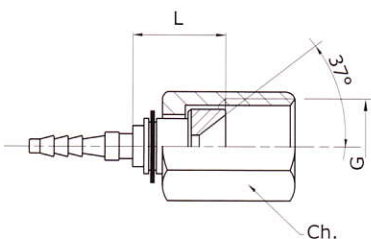
Raccordo a codolo 90° NORMA DIN 2353  
Standpipe 90° According to DIN 2353

| G           | D | L  | L1 | Ch | PN bar | Codice / Ref. |
|-------------|---|----|----|----|--------|---------------|
| M 12x1,5 6L | 6 | 24 | 33 | 14 | 315    | 43910000      |
| M 14x1,5 6S | 6 | 24 | 33 | 17 | 630    | 43920000      |



Raccordo a codolo 90° tenuta O-Ring. NORMA DIN 3865  
Standpipe 90° seal with O-Ring for 24° cone fitting.  
Acc. to DIN 3865

| G           | D | L  | L1 | Ch | PN bar | Codice / Ref. |
|-------------|---|----|----|----|--------|---------------|
| M 12x1,5 6L | 6 | 24 | 34 | 14 | 315    | 43950000      |
| M 14x1,5 6S | 6 | 24 | 34 | 17 | 630    | 43960000      |

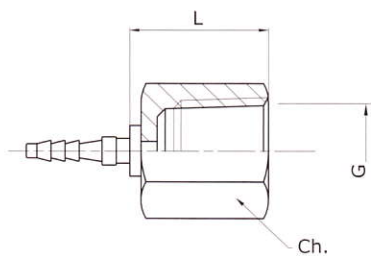


Raccordo femmina connessione JIC 37° Norma SAE J514  
Female fitting JIC 37° connection According to SAE J514

| G            | L  | Ch | PN bar | Codice / Ref. |
|--------------|----|----|--------|---------------|
| 7/16"-20 UNF | 11 | 14 | 630    | 39160000      |
| 1/2"-20 UNF  | 12 | 17 | 630    | 39120000      |

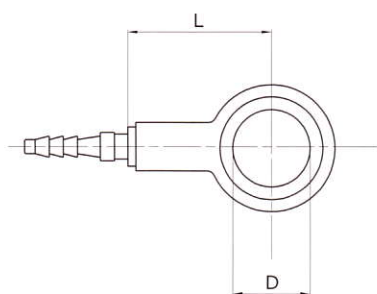
# Tubo capillare alta pressione e raccordi

*Micro hose for high pressure and fittings*



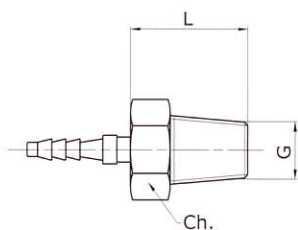
Attacco diretto per manometro.  
 NORMA ANSI / ASME B.1.20.1 - 1983  
*Direct pressure gauge connection.*  
 Acc. to ANSI / ASME B.1.20.1 - 1983

| G            | L  | Ch | PN bar | Codice / Ref. |
|--------------|----|----|--------|---------------|
| 1/4"-18 NPTF | 16 | 19 | 630    | 37140000      |



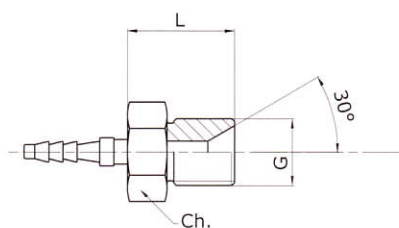
Raccordo ad occhio  
*Banjo*

| D  | L  | PN bar | Codice / Ref. |
|----|----|--------|---------------|
| 10 | 21 | 315    | 42R00000      |



Raccordo maschio conico  
*Tape male fitting*

| G            | L  | Ch | PN bar | Codice / Ref. |
|--------------|----|----|--------|---------------|
| ISO7/1 R1/8" | 15 | 12 | 400    | 44MFGC00      |
| 1/8"-27 NPTF | 15 | 12 | 400    | 44MF0000      |



Raccordo maschio  
*Male fitting*

| G              | L  | Ch | PN bar | Codice / Ref. |
|----------------|----|----|--------|---------------|
| ISO 228 G 1/8" | 15 | 12 | 630    | 44MFG180      |
| ISO 228 G 1/4" | 20 | 17 | 630    | 44MFG140      |